

## AUSTRALIAN CAPITAL TERRITORY BUSINESS INDICATORS, APRIL 1994

### MAIN FEATURES

This edition of *ACT Business Indicators* sees the introduction of a table of major economic indicators comparing the ACT with the rest of Australia. Interstate road freight movement has also been included for the first time.

Several indicators in this issue show that the ACT economy continues to show quite strong growth in some sectors.

Notable increases have occurred in the following series:

- Business expectations for sales of goods and services in the ACT have increased in both the short and medium term. June quarter 1994 sales are expected to increase by 1.6 per cent over the March quarter, this compares to the Australian figure of 1.9 per cent. ACT businesses expect to increase sales by 3.7 per cent in the March quarter of 1995 over the previous quarter which compares to the Australian expectation of 3.9 per cent.
- The \$57.4 million of non-residential work carried out during the December quarter 1993 was 7.1 per cent higher than the September quarter figure but 5.6 per cent lower than for the same period in the previous year.
- December quarter 1993 takings from hotels, motels and guest houses in the ACT have increased by 9.9 per cent over the September quarter. This

compares favourably with a national increase of 5.6 per cent.

- Original new motor vehicle registrations in the ACT during February 1994 rose by 11.1 per cent from the previous month. This compares with a national increase of 25.3 per cent for the same period.
- December quarter 1993 original series State final demand at 1989-90 prices increased by 5.5 per cent in the ACT. This compares with the Australian increase of 6.0 per cent.

Other notable movements included:

- The number of dwelling units approved in the ACT for the month of April decreased by 64.8 per cent from the previous month. In comparison the number of dwelling units approved in Australia increased by 8.7 per cent for the same period.
- Original estimates of total retail turnover decreased in the ACT by 7.7 per cent. This compares with the national decrease of 6.5 per cent.
- The value of new residential work approved in the ACT declined by 6.5 per cent to \$77.4 million between the November and December quarters of 1993.

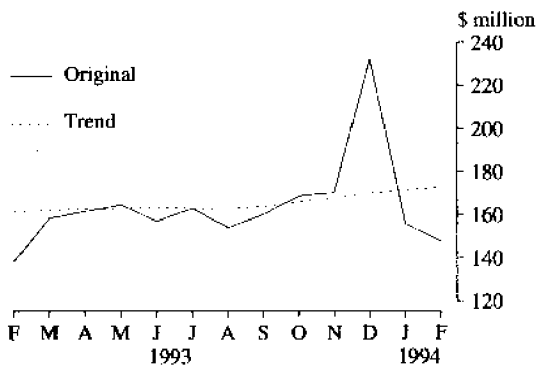
**DALMA JACOBS**  
Statistician Australian Capital Territory

### INQUIRIES

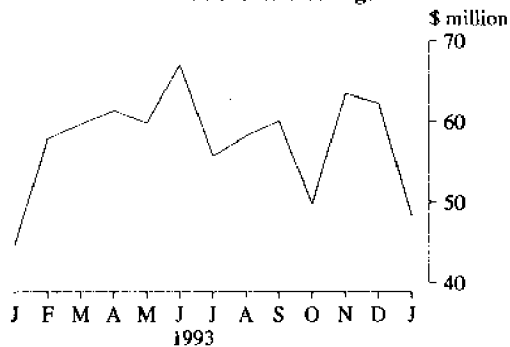
- for further information about statistics in this publication and the availability of related unpublished statistics contact Emily Hansen on Canberra (06) 207 0105 or any ABS State office.
- for information about other ABS statistics and services please contact Information Services on Canberra (06) 252 6627, 252 5402, 252 6007 or any ABS State office.

SELECTED BUSINESS INDICATORS

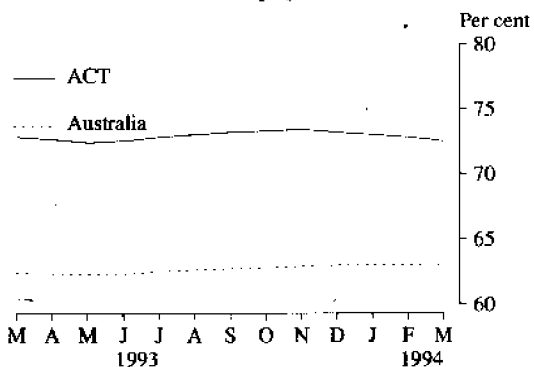
RETAIL TURNOVER



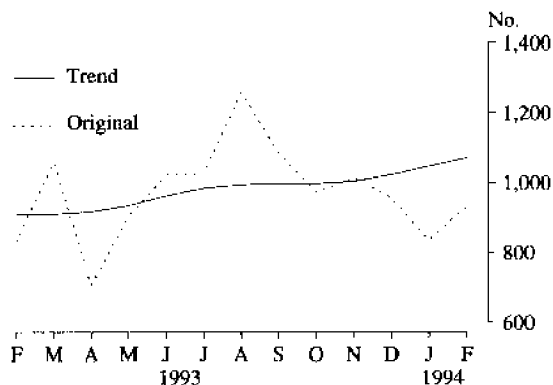
HOUSING FINANCE  
Secured commitments for the purchase of established dwellings



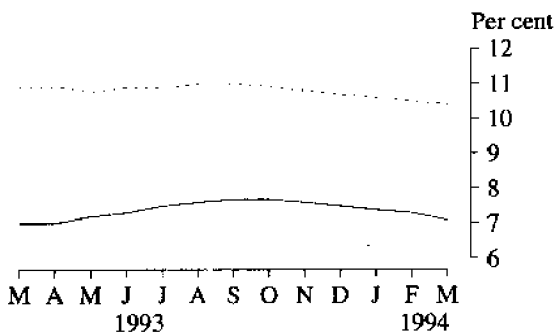
LABOUR FORCE  
Trend employment rates



MOTOR VEHICLE REGISTRATIONS



LABOUR FORCE  
Trend unemployment rates



POPULATION  
Components of change

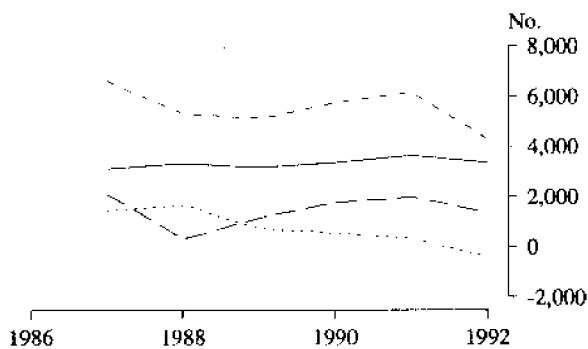


TABLE 1. AUSTRALIAN BUSINESS EXPECTATIONS: SALES,  
MARCH QUARTER 1994/MARCH QUARTER 1995  
EXPECTED AGGREGATE CHANGE

Period	Australian Capital Territory	Australia
Short-term		
March 1994	-0.4	-1.4
June 1994	1.6	1.9
Medium-term		
December 1994	2.8	3.1
March 1995	3.7	3.9

TABLE 2. AUSTRALIAN CAPITAL TERRITORY BUSINESS INDICATORS, APRIL 1994

Indicator	Unit	Australian Capital Territory			Australia		
		Latest figure	Change from previous period (%)	Change from same period previous year (%)	Latest figure	Change from previous period (%)	Change from same period previous year (%)
<b>Average weekly earnings, November 93</b>							
Original series							
Males	\$	690.50	3.1	5.4	619.00	0.1	3.3
Females	\$	478.20	1.2	5.3	408.60	-0.2	3.2
Persons	\$	584.40	2.4	5.6	521.50	0.2	3.5
Trend series							
Males	\$	683.10	0.9	3.6	619.70	0.2	3.1
Females	\$	479.60	0.1	5.7	410.60	0.1	2.7
Persons	\$	581.70	0.6	4.6	522.30	0.1	3.0
<b>Building approvals, February 94</b>							
Dwelling units	no.	241	-64.8	-24.2	13 884	8.7	6.4
Value of new residential	\$m	24.6	-53.8	-11.2	1 181.3	8.0	8.9
Value of residential alterations and additions	\$m	4.7	—	-9.6	173.7	19.6	11.3
Value of non-residential	\$m	19.6	-79.9	102.1	781	38.0	33.5
Value of total building	\$m	49	-68.5	15.0	2 136	18.4	17.0
<b>Building commencements, September quarter 93</b>							
New houses	no.	606	5.2	-14.3	32 525	6.5	11.4
Value of houses commenced	\$m	65.4	2.0	-8.4	2 915.6	7.4	13.1
Value of non-residential building commenced	\$m	63.3	-2.6	42.9	1 823.9	-5.2	23.3
<b>Hotels, motels and guest house accommodation, December quarter 93</b>							
Room occupancy rate(a)	%	67.3	8.2	8.0	55.5	1.8	7.1
Bed occupancy rate(a)	%	39.4	11.6	2.9	34.2	2.1	6.9
Takings from accommodation	\$'000	18 263	9.9	6.9	709 542	5.6	10.0
<b>Housing finance, January 94</b>							
Secured commitments to individuals for							
Construction of dwellings	\$m	9.3	-18.4	50.0	547.1	-22.7	29.6
Purchase of new dwellings	\$m	8.5	-52.5	19.7	161.4	-20.3	45.8
Purchase of established dwellings	\$m	48.4	-22.3	8.3	2 397	-23.3	28.9
Total new housing commitments	\$m	72.4	-28.4	15.5	3 105.4	-23.1	29.8
<b>Industrial disputes in progress, January 94</b>							
Working days lost	'000	—	0.1	—	5.3	19.1	5.7
Days lost per '000 employees (year ended January 94)	no.	76	77	20	108	108	158
<b>Interstate road freight movement, December quarter 93</b>							
Originating	'000 tonnes	4.6	-38.1	18.0	4 658.3	4.48	-5.9
Receiving	'000 tonnes	136.1	2.6	-20.27	4 658.3	4.48	-5.9
<b>Labour force, March 94 p</b>							
Job vacancies (February 94)							
Original series							
Employed	'000	153	0.1	-3.2	7 838.2	1.1	2.3
Unemployed	'000	11.7	-27.3	-18.8	949.2	-5.7	-3.1
Unemployment rate(a)	%	7.1	-25.3	-14.5	10.8	-6.1	-4.4
Participation rate(a)	%	72.4	-2.8	-3.6	63.3	0.3	0.5
Trend series							
Employed	'000	153	-0.1	1.5	7 830.7	0.1	2.7
Unemployed	'000	11.8	-1.7	4.4	906.1	-0.9	-3.0
Unemployment rate(a)	%	7.1	-2.7	1.4	10.4	-1.0	-4.6
Participation rate(a)	%	72.5	-0.4	-0.4	62.9	-0.2	0.8
<b>New motor vehicle registrations, February 94 p</b>							
Motor vehicles (original)	no.	931	11.1	12.0	45 946	25.3	15.2
Motor vehicles (trend)	no.	1 070	2.3	17.7	49 009	1.4	9.4

TABLE 2. AUSTRALIAN CAPITAL TERRITORY BUSINESS INDICATORS, APRIL 1994 — *continued*

Indicator	Unit	Australian Capital Territory			Australia		
		Latest figure	Change from previous period (%)	Change from same period previous year (%)	Latest figure	Change from previous period (%)	Change from same period previous year (%)
<b>Population, September quarter 93</b>	'000	299	—	1.3	17 712.7	0.3	1.1
Natural increase	no.	795	-7.0	-5.5	32.1	-9.1	-0.9
Net migration	no.	79	-121.5	-154.1	17.2	-2 011.1	55.0
Total increase	no.	877	57.7	96.2	186.7	4.4	1.2
<b>Prices</b>							
Consumer Price Index, All groups (Dec. 93)	(1989-90=100.0)	111.3	0.3	2.1	110.0	0.2	1.9
Established house price index (Sept. 93)	(1989-90=100.0)	133.4	-0.3	0.4	107.4	0.1	2.7
Price index of house building materials (Jan. 94)	(1985-86=100.0)	150.7	0.2	5.8	152.3	0.3	5.5
<b>Retail turnover, February 94</b>							
<b>Original series</b>							
Grocers, confectioners, tobacconists	\$m	50.3	-4.2	9.6	2 358.5	-3.3	4.7
Department and general stores	\$m	17.2	-8.5	1.8	657.9	-10.9	3.3
Hotels, liquor stores, licensed clubs	\$m	9.3	-7.9	6.9	941.8	-10.6	9.5
All other stores	\$m	71.4	-4.2	6.6	3 530.7	-6.7	5.1
Total	\$m	148.2	-4.9	7.0	7 488.9	-6.6	5.4
<b>Trend series</b>							
Grocers, confectioners, tobacconists	\$m	54.1	0.7	8.9	2 515.8	0.2	4.4
Department and general stores	\$m	23	—	-0.4	895.8	0.2	1.1
Hotels, liquor stores, licensed clubs	\$m	10.9	-0.9	-0.9	1 035.6	0.3	8.3
All other stores	\$m	85.2	1.2	9.7	4 027.4	0.5	5.6
Total	\$m	173.2	0.8	7.2	8 474.6	0.4	5.1
<b>State accounts, December quarter 93</b>							
<b>Original series</b>							
Gross State product at current prices	\$m	2 453	2.5	8.1	114 399	10.1	6.7
State final demand at average 1989-90 prices	\$m	3 037	5.2	2.7	99 997	6.0	1.7
Private final consumption expenditure	\$m	1 406	6.9	6.8	70 097	7.7	5.4
Private gross fixed capital expenditure and components	\$m	285	5.2	-12.0	16 449	8.0	-2.1
<b>Trend series</b>							
Gross State product at current prices	\$m	2 322	0.7	6.9	106 555	1.3	5.9
State final demand at average 1989-90 prices	\$m	2 935	-0.1	1.8	95 206	0.5	1.6
Private final consumption expenditure	\$m	1 334	1.9	6.0	66 152	1.4	4.7
Private gross fixed capital expenditure and components	\$m	271	-4.6	-7.2	15 357	1.5	2.8

Source: ABS Catalogue Nos: 3101.0, 5242.0, 5250.0, 5609.0, 6203.0, 6321.0, 6354.0, 6401.0, 6403.0, 6408.0, 8501.0, 8635.0, 8731.0, 8752.0, 9214.0, 9301.0, 9303.0.

TABLE 3. ACT IN RELATION TO THE REST OF AUSTRALIA

Indicator	Latest period	NSW	Vic.	Qld	SA	WA	Tas.	NT	Aust.	ACT	
Employed persons	'000	2 633	1 955.9	1 408.3	637.5	782.3	195.2	73	7 838.2	153	
Consumer price index: All groups (1989-90 =100.0)	Dec. qtr 93	108.8	110.8	110.2	112.8	108.5	111.6	111.7	110	111.3	
Average weekly employee earnings: full-time adult ordinary time	\$	Nov. qtr 93	614.50	600.50	577.50	599.40	605.90	588.30	634.30	604.20	689.10
Retail turnover (trend)	\$m	Feb. 94	2 977.9	1 994.4	1 503.4	655.8	875.6	216.3	n.p.	8 474.6	173.2
New motor vehicle registration	no.	Feb. 94	16 295	10 699	8 456	3 186	5 016	929	434	45 946	931
Dwelling units approved	no.	Feb. 94	3 535	2 716	3 953	851	2 100	344	144	13 884	241
Value of non-residential building approved	\$m	Feb. 94	199.7	363.4	105.1	40	42.7	6.2	4.4	781	19.6
Value of all buildings approved	\$m	Feb. 94	606.5	645.1	456.3	108.2	218.4	32.7	19.9	2 136	49
Value of engineering construction work done	\$m	Sept. qtr 93	891.1	479.7	728.9	170.4	420.8	57.3	51.2	2 843	43.7
Room occupancy rate in licensed hotels and motels, etc.	%	Dec. qtr 93	55.1	47.6	62.6	50.3	57.4	54	50.9	55.5	67.3

Figures in the above table are either preliminary, final, or revisions to previously published figures. Users should check the latest relevant publication or with ABS Information Services if the status of the statistic is important. Symbols used in this publication: — nil or rounded to zero; n.a. — not available; p — preliminary data; n.p. — not available for publication.

(a) Change shown in terms of percentage points.

